

**ELECTRICAL SPECIFICATIONS @ 25°C unless otherwise noted:**

**LONGITUDINAL BALANCE:** 35dB min., 1.544MHz, per ITU Method (L->M).

**D.C. RESISTANCE (@20°C):** 1-2; 3-5; 6-7; 8-10; 11-12; 13-15; 16-17; 18-20; 21-22; 23-25; 26-27; 28-30; 31-32; 33-35; 36-37; 38-40, 0.70 ohms max.

**DIELECTRIC RATING:** 1500VAC, 1 minute tested by applying 1875VAC for 1 second between 1-40; 3-37; 6-35; 8-32; 11-30; 13-27; 16-25; 18-22.

**INDUCTANCE:** 1.2mH min., 10kHz, 100mVAC, 3-5; 8-10; 13-15; 18-20; 23-25; 28-30; 33-35; 38-40, Ls.

**LEAKAGE INDUCTANCE:** 0.5uH max., 100kHz, 100mVAC, 3-5(tie 36+37); 8-10(tie 31+32); 13-15(tie 26+27); 18-20(tie 21+22); 25-23(tie 16+17); 30-28(tie 11+12); 35-33(tie 6+7); 40-38(tie 1+2), Ls.

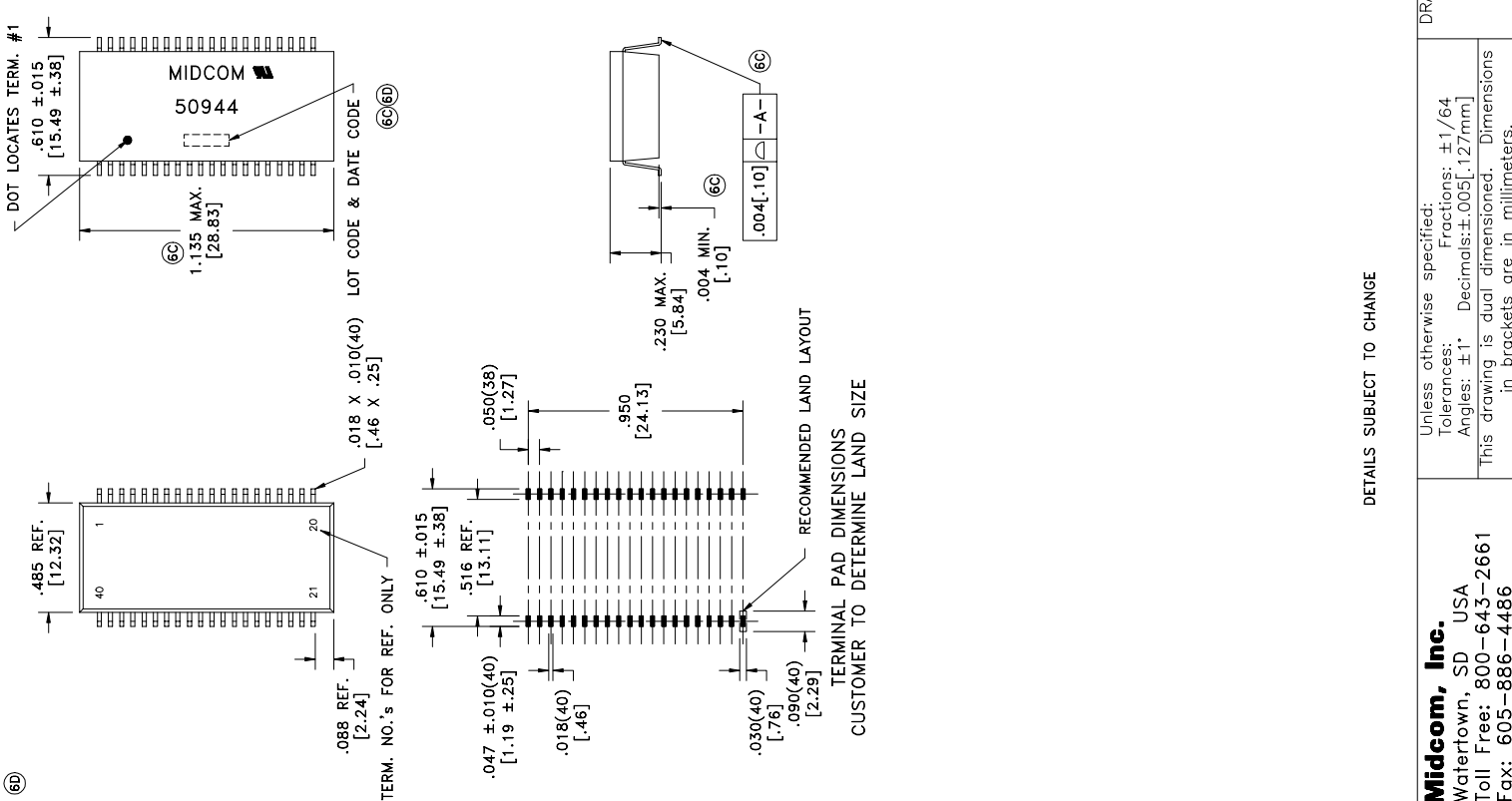
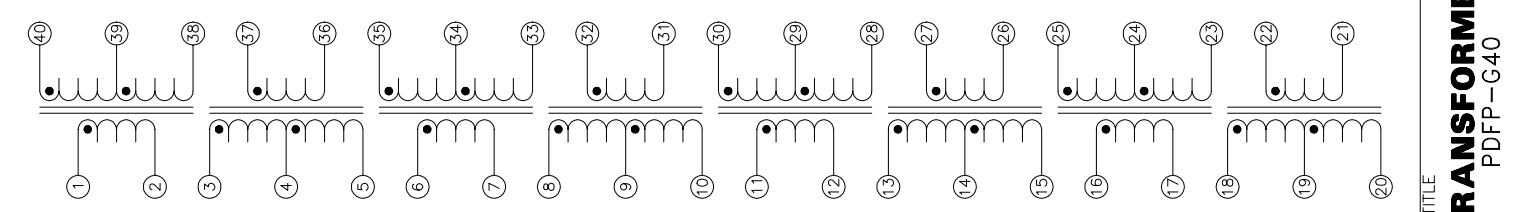
**TURNS RATIO:** (40-38):(1-2); (35-33):(6-7); (30-28):(11-12); (25-23):(16-17) = 1.26:1, ±2%; (3-5):(37-36); (8-10):(32-31); (13-15):(27-26); (18-20):(22-21) = 2:1, ±2%.

**INTERWINDING CAPACITANCE:** 25pF max., 100kHz, 100mV, 1-40; 3-37; 6-35; 8-32; 11-30; 13-27; 16-25; 18-22, Cs.

**OPERATING TEMPERATURE RANGE:** -40°C to +85°C.

**COPLANARITY:** All 40 terminals must lie on a plane within .004[.10] of Surface A after lead tinning.

Designed to comply with the following requirements as defined by IEC950, EN60950, UL1950/CSA950 and AS/NZS3260:  
- TNV-1 to SELV isolation.



DETAILS SUBJECT TO CHANGE

**Midcom, Inc.**  
Watertown, SD USA  
Toll Free: 800-643-2661  
Fax: 605-886-4486

Unless otherwise specified:  
Tolerances: Fractions: ±1/64  
Angles: ±1°  
Decimals: ±.005 [ .127mm ]  
This drawing is dual dimensioned. Dimensions in brackets are in millimeters.

DRAWING TITLE  
**TRANSFORMER**  
PDFP-G40

DRAWING NO.  
**50944R**

REVISIONS: SEE SHEET 1 SCALE --- SHEET 2 OF 8

|                    |                               |
|--------------------|-------------------------------|
| AGENCY NUMBER      | UL 60950-1 E205930            |
| UL 60950-1 E205930 | CSA 60950-1 E205930 (Via CUL) |
| REV.               | 6D<br>1/05                    |