



**Discrete Single Port
Gigabit Low Profile**

LANDatacom

Typical Common Electrical Characteristics¹

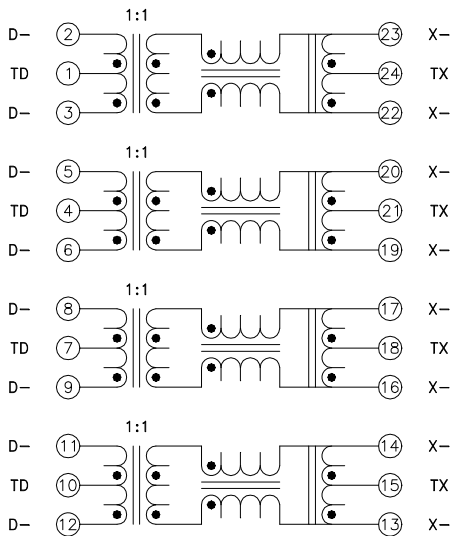
Dielectric Rating	1500VAC	for 1 minute
Insertion Loss	-1.0dB max.	300kHz-100MHz
Return Loss	-18dB min.	500kHz-40MHz
	-15dB min.	40MHz-60MHz
	-12dB min.	60MHz-80MHz
	-10dB min.	80MHz-100MHz
Cross Talk	-35dB min.	300kHz-100MHz
Common Mode Rejection	-42dB min.	300kHz-32MHz
	-33dB min.	32MHz-100MHz

Note1: See specification sheet for electrical characteristic

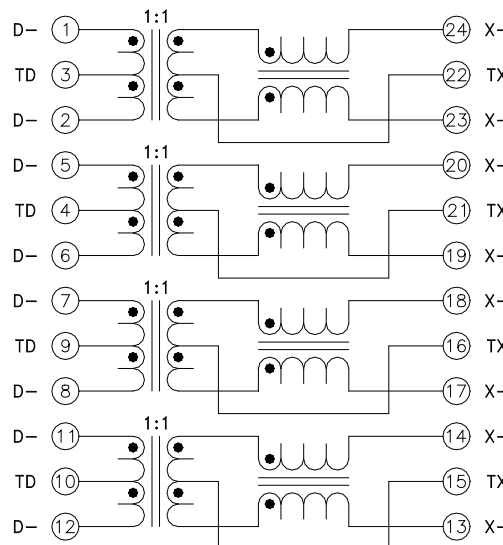
Features

- Meets IEEE 802.3 standard
- Surface mount
- Transfer mold package
- Optional pin-outs
- Industry standard footprint
- Optimum performance
- Cost Effective
- Both RoHS compliant and lead-terminal parts available

Part Number	Turns Ratio	Operating Temp.		Schematic	Mechanical
		Range			
000-7412-35	1CT:1CT	0°C to +70°C		1	1
749020111	1CT:1CT	0°C to +70°C		2	2



Schematic 1



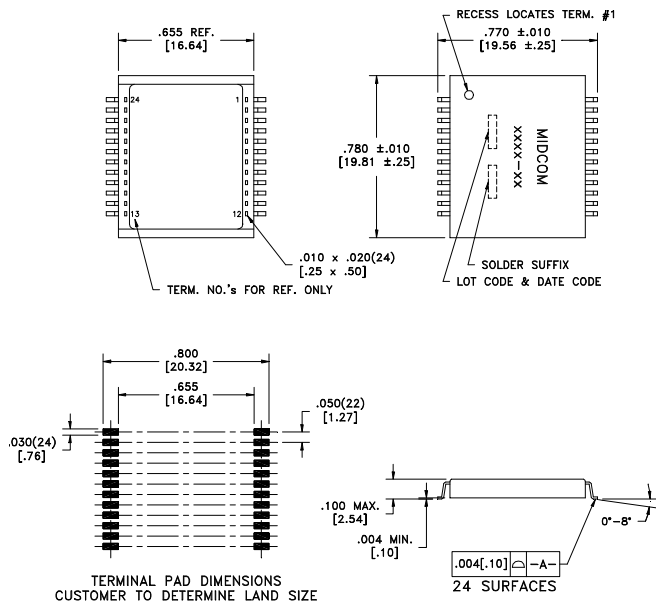
Schematic 2

Discrete Single Port Gigabit Low Profile

Midcom

LANDatacom

Mechanical 1



Mechanical 2

