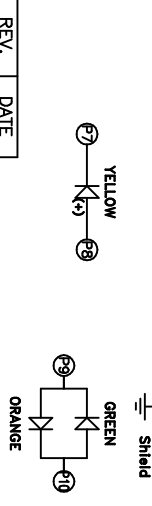
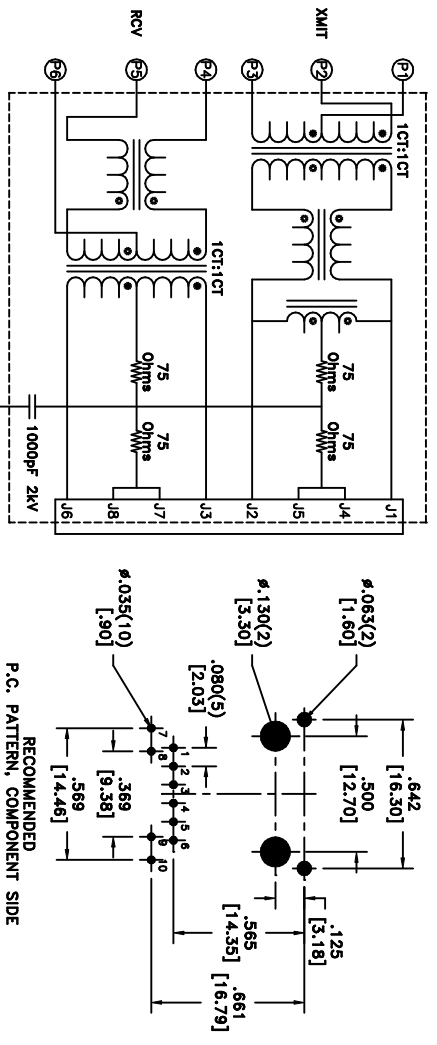
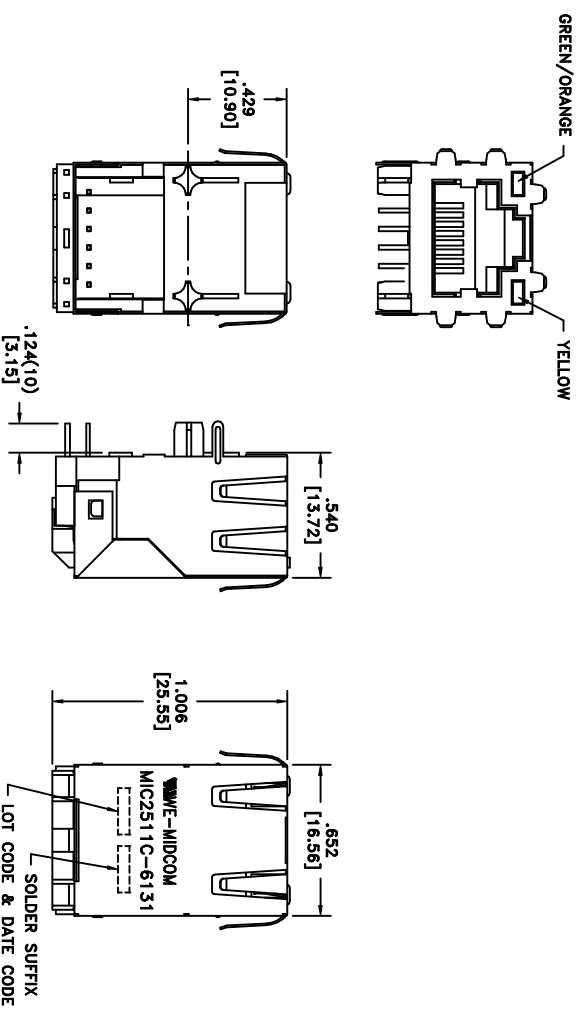


SOLDER SUFFIX	CUSTOMER TERMINAL	RoHS	LEAD(Pb)-FREE
LF3	Sn100%	Yes	Yes

**ELECTRICAL SPECIFICATIONS @ 25°C unless otherwise noted:**

PARAMETER	TEST CONDITIONS	VALUE
INDUCTANCE	J1-J2 100kHz, 100mVAC, 8mADC, 1p	350uH min.
INDUCTANCE	J3-J6 100kHz, 100mVAC, 8mADC, 1p	350uH min.
DIELECTRIC	P1-J1 tie(P3+P4, J2+J3)	1500Vrms, 1 minute
TURNS RATIO	(P2-P3):(J1-J2)	1:1, ±2%
TURNS RATIO	(P4-P5):(J3-J6)	1:1, ±2%
INSERTION LOSS	1M - 100MHz	-1.0dB max.
RETURN LOSS	1M - 30MHz	-16dB min.
RETURN LOSS	30M - 60MHz	-14dB min.
RETURN LOSS	60M - 80MHz	-12dB min.
CROSSTALK	1M - 100MHz	-35dB min.
COMMON MODE REJECTION	500k - 100MHz	-35dB min.

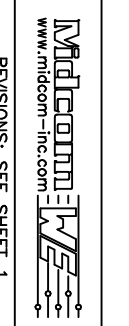


REV.	DATE

Packaging Specifications  
 Method: Tube  
 PKG-0549  
 www.midcom-inc.com

Unless otherwise specified:  
 Tolerances:  
 Angles: ±1°  
 Fractions: ±1/64  
 Decimals: ±.010[.25]  
 This drawing is dual dimensioned. Dimensions in brackets are in millimeters.

DRAWING TITLE  
**TRANSFORMER**  
 10/100Mbs  
 eSos p/n: 7499011611



DRAWING NO. AGENCY NUMBER  
 UL60950-1 E205630

GENERAL SPECIFICATIONS:  
 OPERATING TEMPERATURE RANGE: 0°C to +70°C.

REVISIONS: SEE SHEET 1 SCALE: --- SHEET 2 OF 6