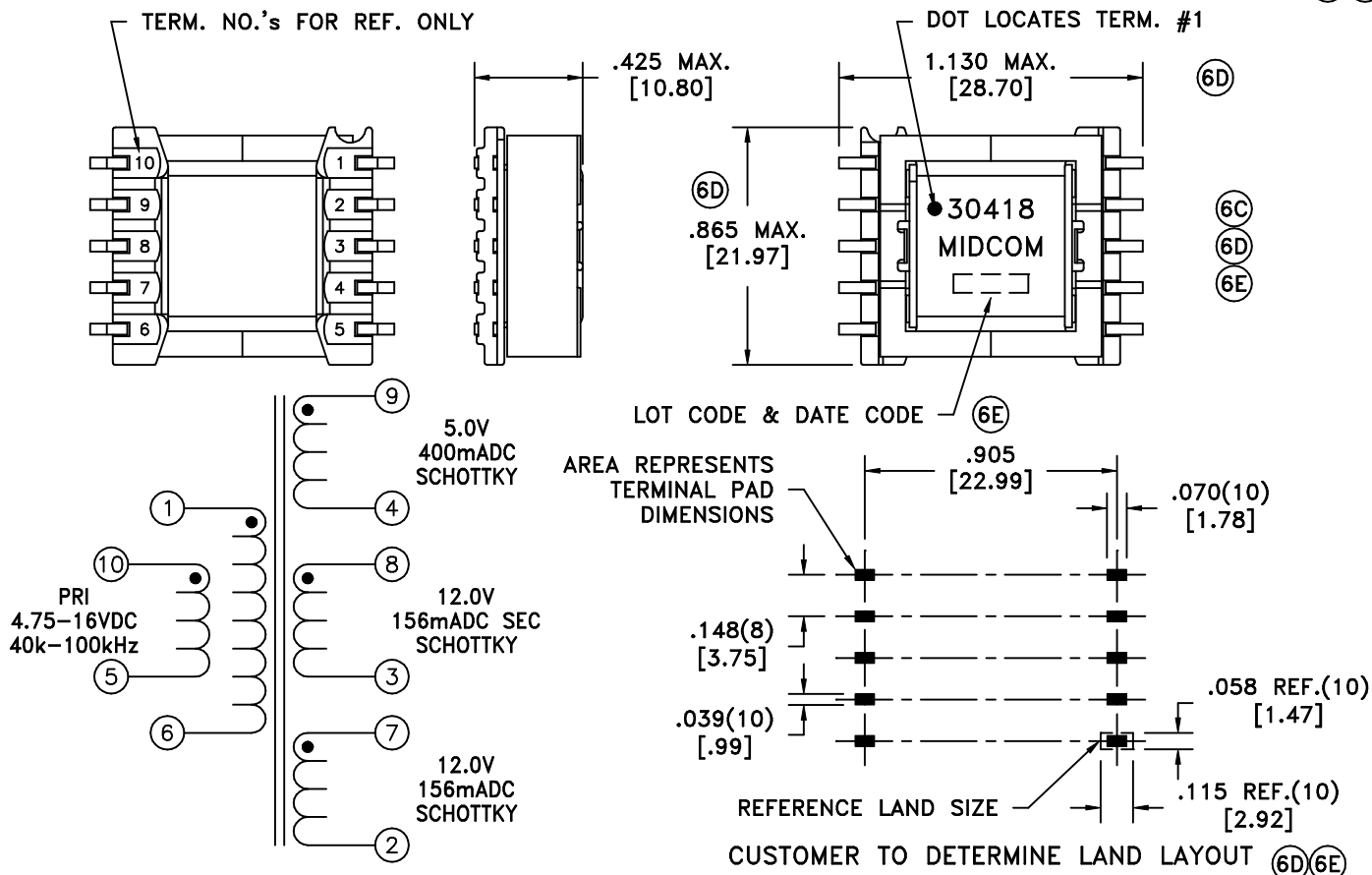


6C 6D



ELECTRICAL SPECIFICATIONS @ 25°C unless otherwise noted:

D.C. RESISTANCE (@20°C):
 1-6, 0.058 ohms max.
 9-4, 0.063 ohms max.
 8-3, 0.378 ohms max.
 7-2, 0.377 ohms max.
 10-5, 0.076 ohms max.

DIELECTRIC RATING; 500VAC, 1 minute tested by applying 625VAC for 1 second between PRI-SEC.

INDUCTANCE: 26.8uH ±5%, 10kHz, 100mVAC, 1-6, Ls.

LEAKAGE INDUCTANCE: 350nH typ., 100kHz, 100mVAC, 1-6(tie 9+4, 8+3, 7+2, 10+6, 1+5), Ls.

URNS RATIO:
 (1-6):(9-4) = 1:1, ±1%.
 (1-6):(8-3) = 0.439:1, ±1%.
 (1-6):(7-2) = 0.439:1, ±1%.
 (1-6):(10-5) = 1:1, ±1%.

TRANSFORMER INFORMATION:


Pout max.: 5.75W
 Pout min.: 2.81W
 Estimated Temp. Rise @ Pout max.: 22.1°C
 Estimated Efficiency: 74.3%
 Estimated Maximum Duty Cycle: 57.2%

SWITCH SELECTION INFORMATION

Input Voltage Range: 4.75 - 16V
 Peak Current: 4.876A
 Vsw @ Rated Output Voltages: 22 + (Vmax - 16)
 Operating Frequency: 40k - 100kHz (6B)

Transformer will operate in Discontinuous Mode below Minimum Specified Output Voltage of Pout Min. Pout min. varies with frequency of switcher (from 40k to 100kHz).
 Pout Min = 281.0/(Frequency in kHz) Watts.

DETAILS SUBJECT TO CHANGE

Unless otherwise specified: Tolerances: Angles: ±1° Fractions: ±1/64 Decimals: ±.005[.13]	DRAWING TITLE <h2 style="text-align: center;">TRANSFORMER</h2> eiSos p/n:	 www.midcom-inc.com	PART # 30418R
	SEE REVISION SHEET FOR REVISION LEVEL	PART NO. (6D) <h2 style="text-align: center;">30418R</h2> REV. (6E) 1/03	

This drawing is dual dimensioned.
 Dimensions in brackets are in millimeters.