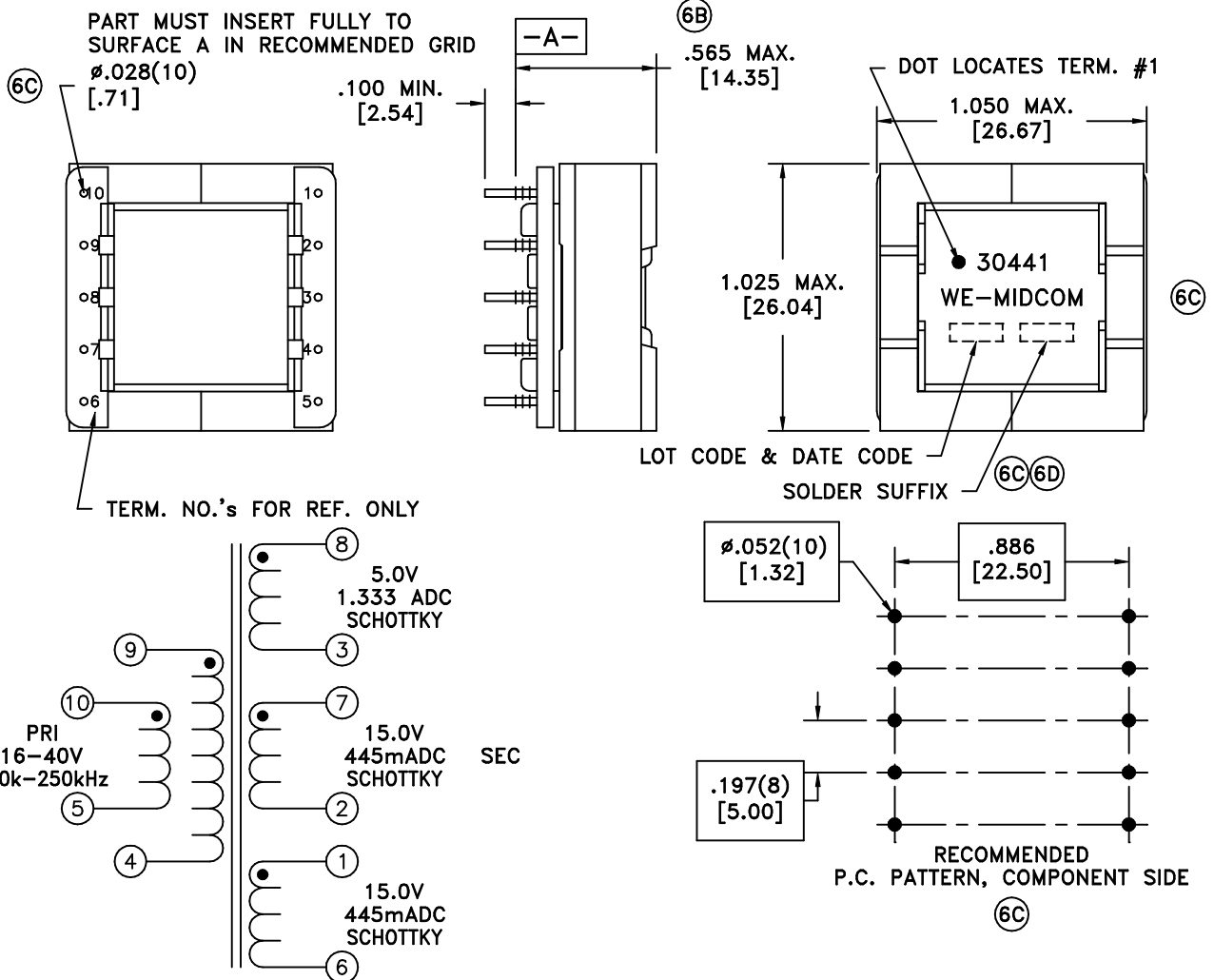


SOLDER SUFFIX	CUSTOMER TERMINAL	RoHS	LEAD(Pb)-FREE	6D
	Sn63%, Pb37%	No	No	
LF1	Sn96%, Ag4%	Yes	Yes	



**ELECTRICAL SPECIFICATIONS @ 25°C unless otherwise noted:**

D.C. RESISTANCE (@20°C):	10-5, 0.135 ohms max.	7-2, 0.249 ohms max.
	1-6, 0.261 ohms max.	9-4, 0.107 ohms max.
	8-3, 0.027 ohms max.	
DIELECTRIC RATING:	500VAC, 1 minute tested by applying 625VAC for 1 second between PRI-SEC.	
6C INDUCTANCE:	55.9uH $\pm 5\%$ , 10kHz, 100mVAC, 9-4, Ls.	
LEAKAGE INDUCTANCE:	226nH typ., 100kHz, 100mVAC, 9-4(tie 8+3, 7+2, 1+6, 4+5, 10+9), Ls.	
6C TURNS RATIO:	(10-5):(9-4) = 1:1, $\pm 1\%$ .	(7-2):(9-4) = 1.348:1, $\pm 1\%$ .
	(1-6):(9-4) = 1.348:1, $\pm 1\%$ .	(9-4):(8-3) = 2.091:1, $\pm 1\%$ .

Midcom p/n 30441-LF1 is eiSos p/n: 750030441.

**TRANSFORMER INFORMATION:**

Pout max.: 20.00W  
Pout min.: 5.76W  
Estimated Temp. Rise @ Pout max.: 40.6°C  
Estimated Efficiency: 74.3%  
Estimated Maximum Duty Cycle: 44.8%

**SWITCH SELECTION INFORMATION**

Input Voltage Range: 16 - 40V  
Peak Current: 4.95A  
Vsw @ Rated Output Voltages: 52 + (Vmax - 40)  
Operating Frequency: 100k - 250kHz

Transformer will operate in Discontinuous Mode below Minimum Specified Output Voltage of Pout Min.  
Pout min. varies with frequency of switcher (from 100 to 250kHz) Pout Min = 576.0/(Frequency in kHz) Watts

DETAILS SUBJECT TO CHANGE

Unless otherwise specified: Tolerances: Angles: $\pm 1^\circ$ Fractions: $\pm 1/64$ Decimals: $\pm .005$ [0.13]	DRAWING TITLE <b>TRANSFORMER</b>	 www.we-online.com/midcom	PART NO. <b>30441/-LF1</b>	REV. <b>6D</b> 11/10	PART# 30441/-LF1
	eiSos p/n: 750030441				
This drawing is dual dimensioned. Dimensions in brackets are in millimeters.					