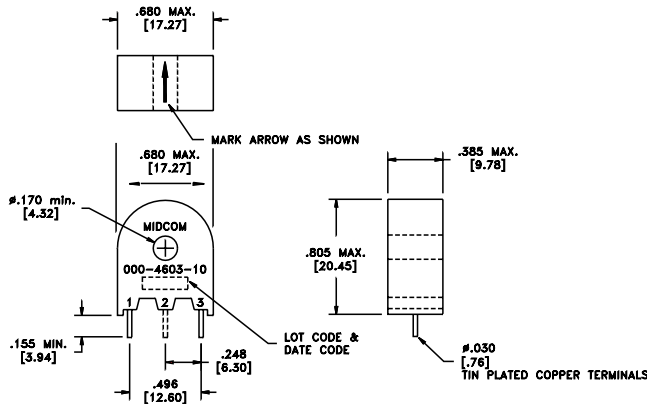
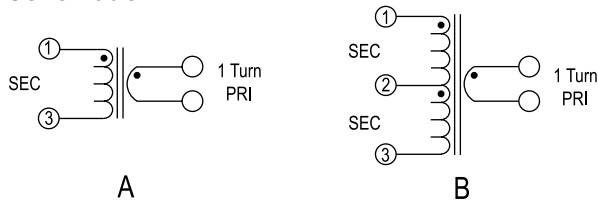


Current Sense Transformers

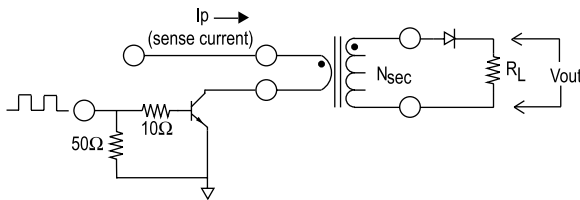
Dimensions



Schematic



Test Circuit



Part Number	Schematic	Turns 1-3 ²	L ¹ 1-3(mH) min	DCR 1-3 max	R _L (Ohms)
000-4600-10	A	50	5	0.70	50
000-4601-10	A	100	20	1.40	100
000-4602-10	A	200	80	4.50	200
000-4603-10	B ⁶	50CT	5	0.70	50
000-4604-10	B ⁶	100CT	20	1.40	100
000-4605-10	B ⁶	200CT	80	4.50	200

Notes:

- Inductance (L) measured at 10KHz, 100mVAC, 0.0ADC
- CT = Center Tapped winding
- Output: 1 Volt/Amp at rated R_L
- Peak Sense Current: 20 Amp Max
- Maximum breakdown voltage between primary and secondary is 3000VAC
- Includes pin # 2

Features

- Encapsulated construction
- Frequency range ≥10kHz

Applications

- Isolated current feedback in switching applications
- Load drop detection
- Circuit overload detection
- Motor operation monitoring
- Industrial equipment

Environmental Specifications

- Operating temperature range: -40°C to +85°C
- Storage temperature range: -50°C to +125°C

Packaging

- Parts are packaged 31 pieces per tube/1023 pieces per box